



# ToolsXperts 2023

## What's new

SOLID  PERTS  
by solidxperts



# Table of Contents

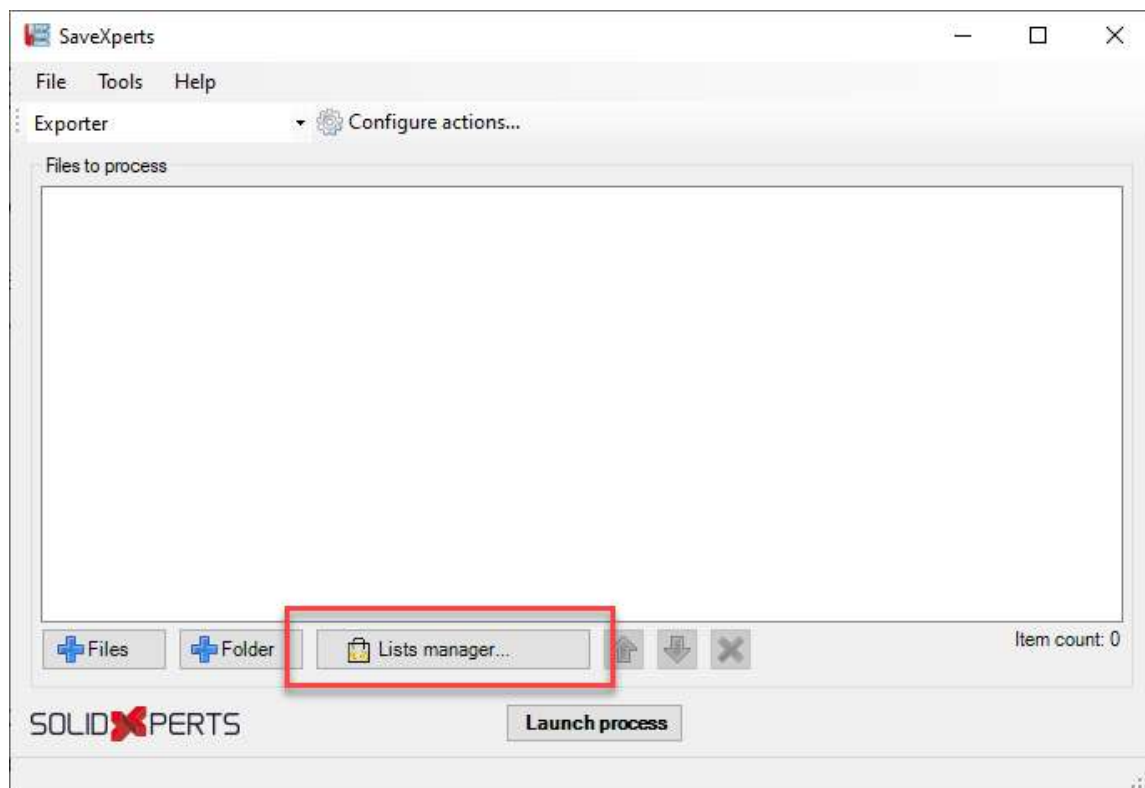
Lists Manager .....	3
CutXperts.....	4
Quantity multiplying factor.....	4
Dynamic export path.....	5
Replacement of non-threaded hole with a symbol .....	6
Sheet metal – Support of countersunk and counterbored holes .....	7
DoctorXperts.....	8
Size and position of the main window.....	8
Redesign of the options windows .....	8
Obtaining usage by parent assemblies .....	9
Modify Dimension.....	11
Quantity Report.....	11
TasksXperts.....	12
SOLIDWORKS license transfer helper .....	12
Action executed when printing.....	13



## Lists Manager

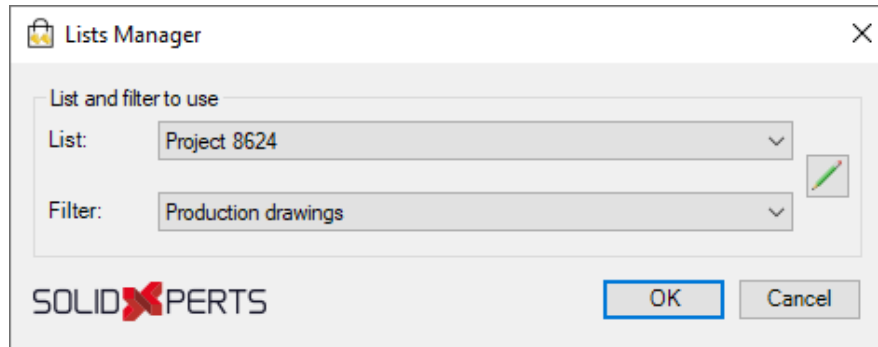
A new system called List Manager allows you to create lists of files. File lists are useful when the same files need to be processed multiple times, such as all drawings in a project.

The List Manager has been added to most of the tools that allow you to process a list of files, such as PrintXperts, SaveXperts, CutXperts and DoctorXperts. Use this button to access the List Manager:






When you access the list manager, the following window is displayed to offer the existing lists and their filters:



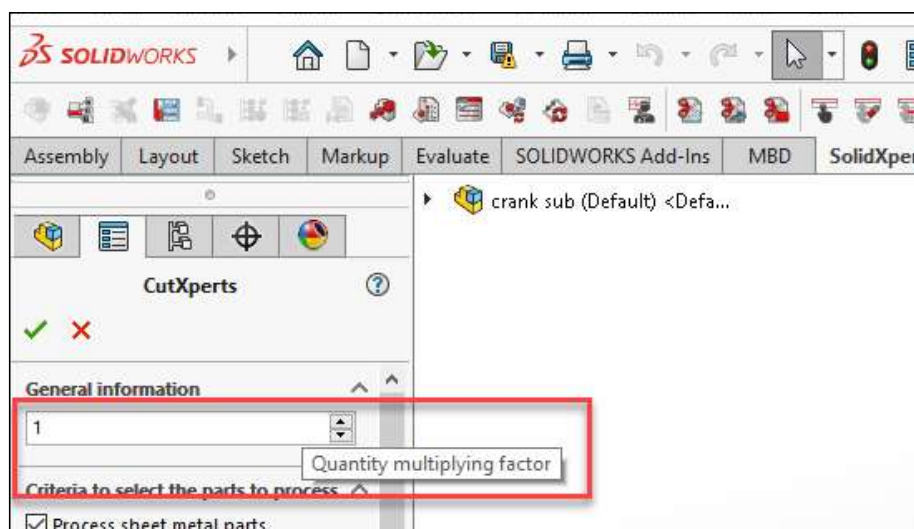
All you have to do is select a list and a filter and click OK to import the files to the main application.

Use the button  to manage the lists (create, modify, delete, etc.).

## CutXperts

### Quantity multiplying factor

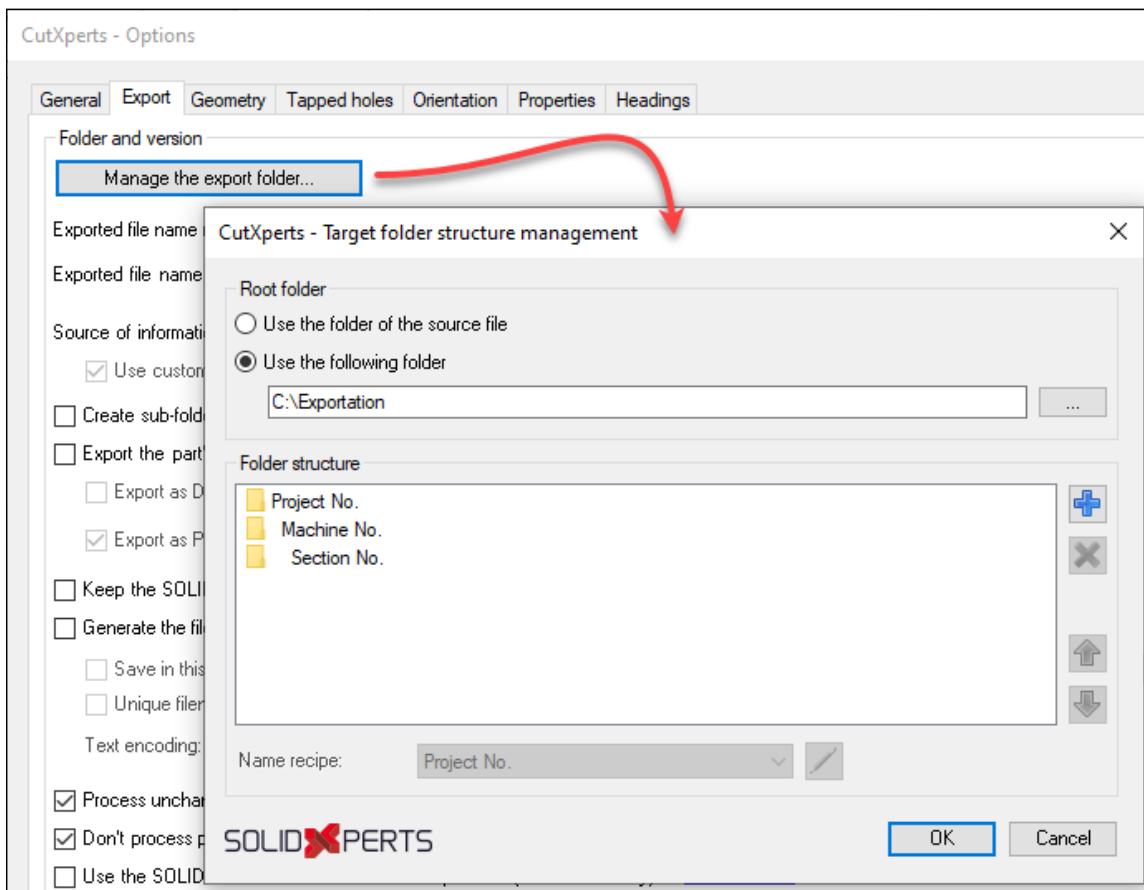
It is now possible to specify a factor which will then be used to multiply the quantity of each element (parts, bodies, etc.) in the report and in the drawing notes:





## Dynamic export path

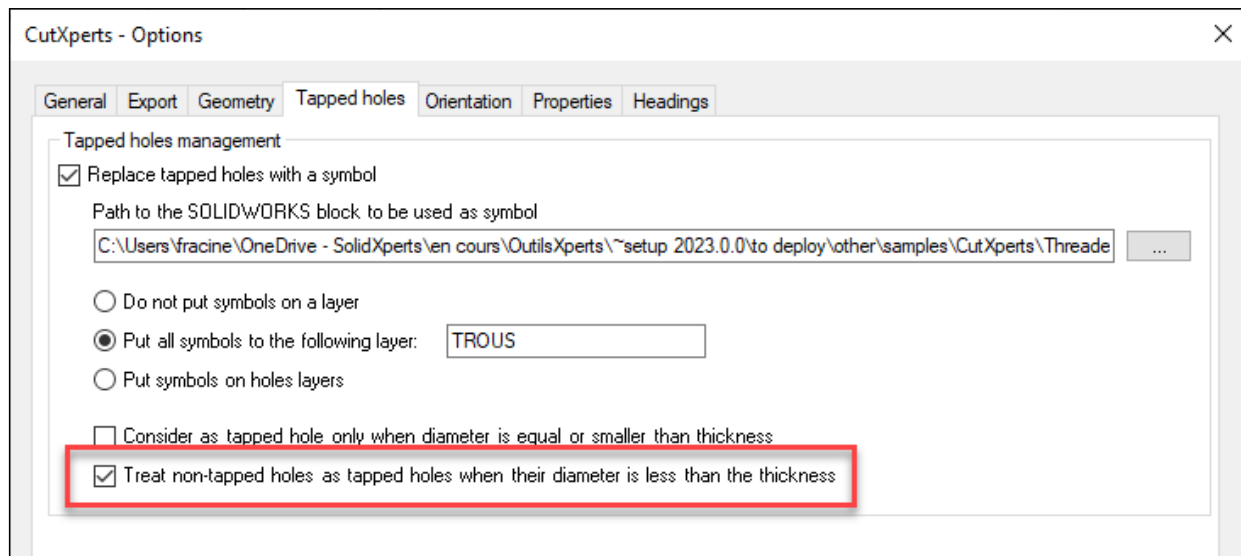
The export path can now be dynamic, which means it can be built using information from the source model. Just create a name recipe for each folder level. For instance:





## Replacement of non-threaded hole with a symbol

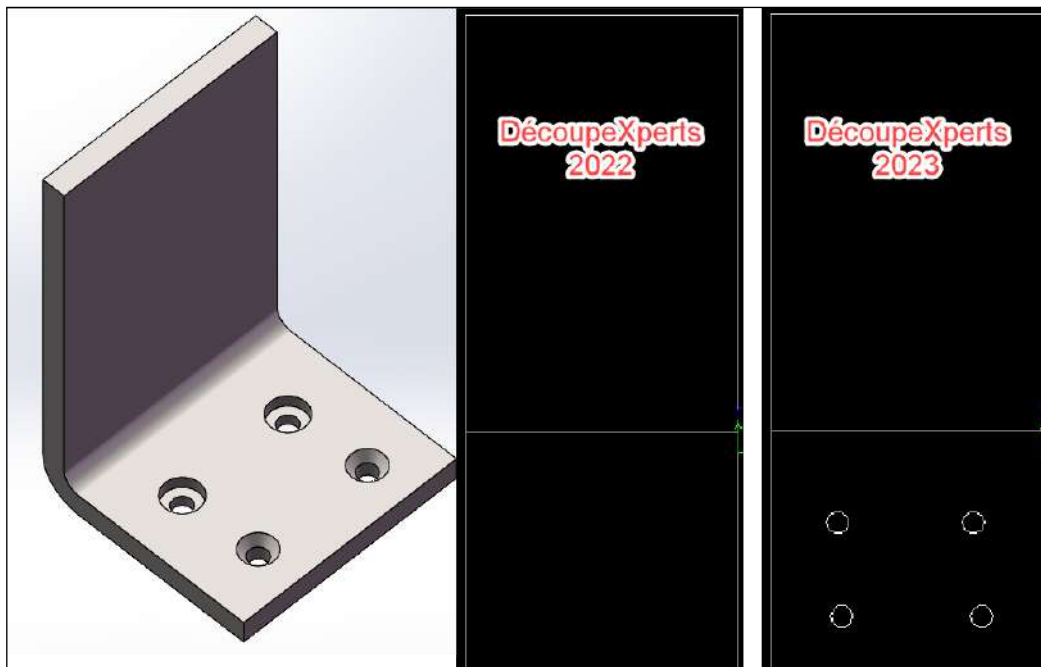
It is now possible to replace the holes that are not tapped by a symbol (block) when their diameter is less than the thickness of the part:





## Sheet metal – Support of countersunk and counterbored holes

For sheet metal parts, previous versions of CutXperts did not export countersunk or counterbored holes, or these holes were exported incorrectly. These holes are now exported according to their smallest detected diameter.



This improvement affects the processing of sheet metal parts that use a temporary drawing. Direct export remains unchanged.



## DoctorXperts

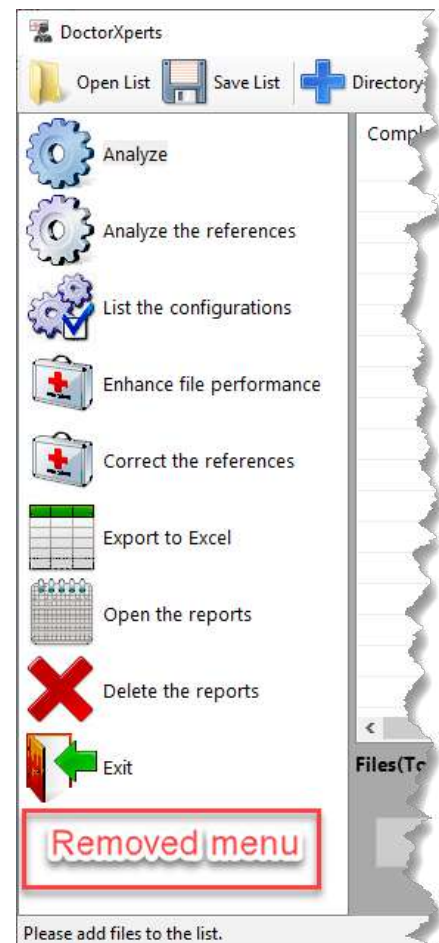
### Size and position of the main window

The size and the position of the main window are not saved each time the tool is used.

### Redesign of the options windows

The Options menu has been removed from the functions list. Options that were available through the options window have been moved to different windows that are displayed when using functions like Analyze and Enhance file performance.

This improvement makes it possible to revise the options each time a function is used and therefore puts these options more prominently. It is also easier to control the options according to the function used.

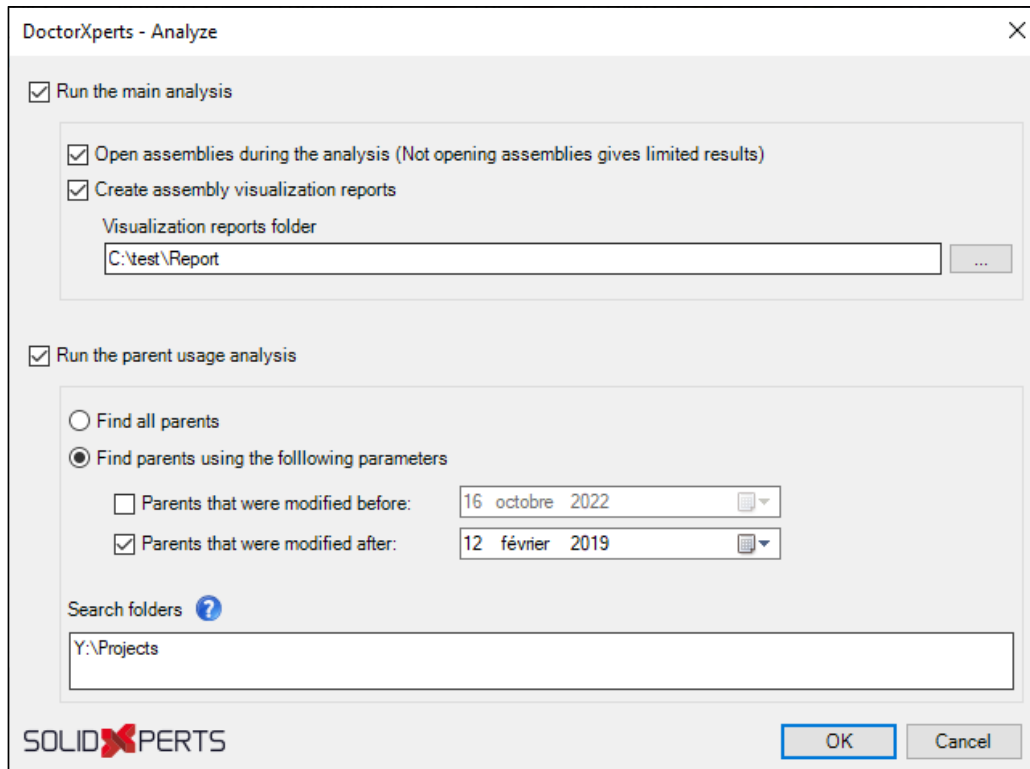






## Obtaining usage by parent assemblies

The **Analyze** menu now displays this window before processing begins:

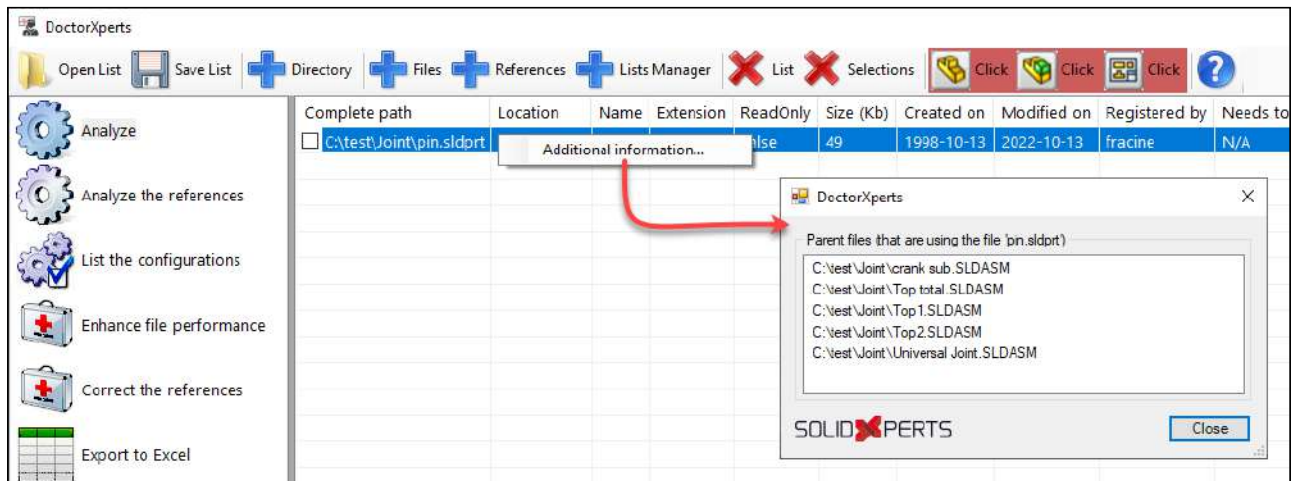


The analysis now offers these options each time it is used. The top section is related to the analysis that was already offered in previous versions of DoctorXperts. The bottom section offers a new type of analysis that allows you to obtain the list of assemblies that use the analyzed file. For example, a part that would be used by several assemblies. The image below shows that a new column offers the total number of times the part is used.

Feature after	Update holders	Part count	Tessellation quality	Referencing
N/A	N/A	N/A	N/A	13



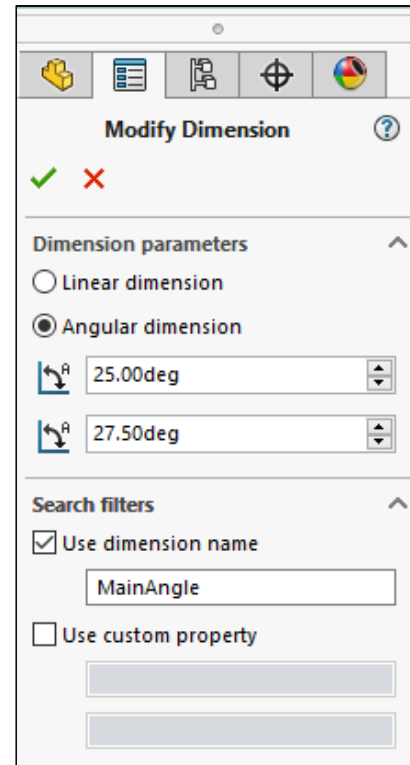
The analysis is done recursively upwards, e.g., the assemblies that contain the part are considered as well as their parents up to the highest level. The list of these assemblies is available by a right mouse button menu after the analysis.





## Modify Dimension

It is now possible to manage an angular dimension. The parameters are the same as for a linear dimension, except that the value to find and the value to replace are angles.



## Quantity Report

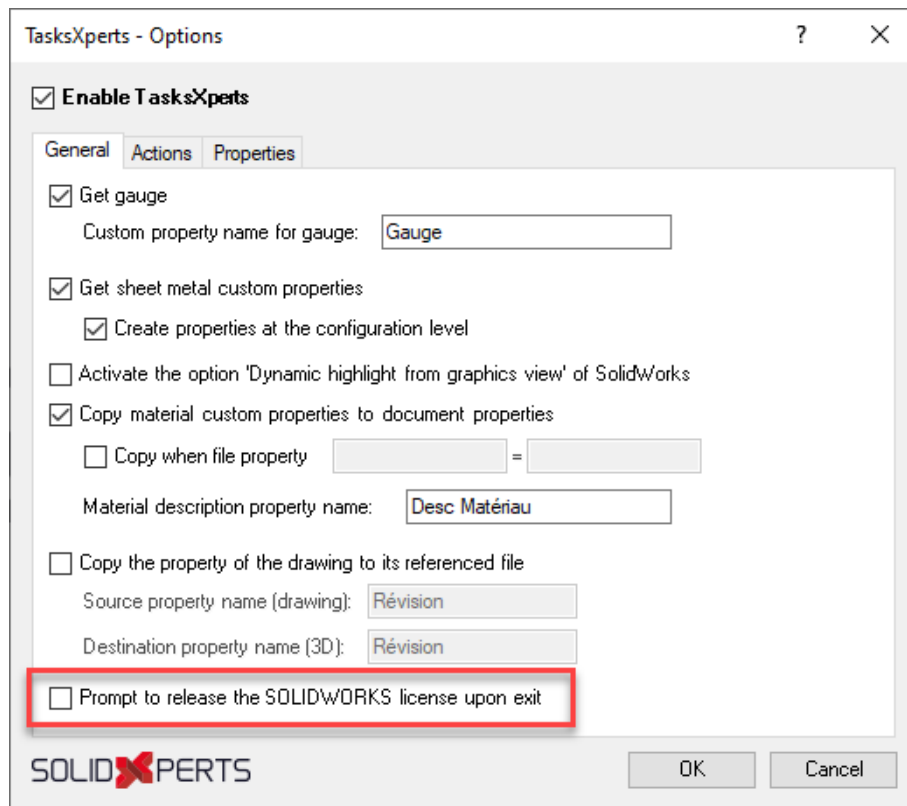
A version of the Quantity Report can now be used directly in SOLIDWORKS PDM Professional. This version allows to get the Excel report directly from PDM without having to open the assembly in SOLIDWORKS. See details in the PDMxperts tools documentation.



## TasksXperts

### SOLIDWORKS license transfer helper

A new option has been added to help transfer (free) the standalone licenses of SOLIDWORKS:

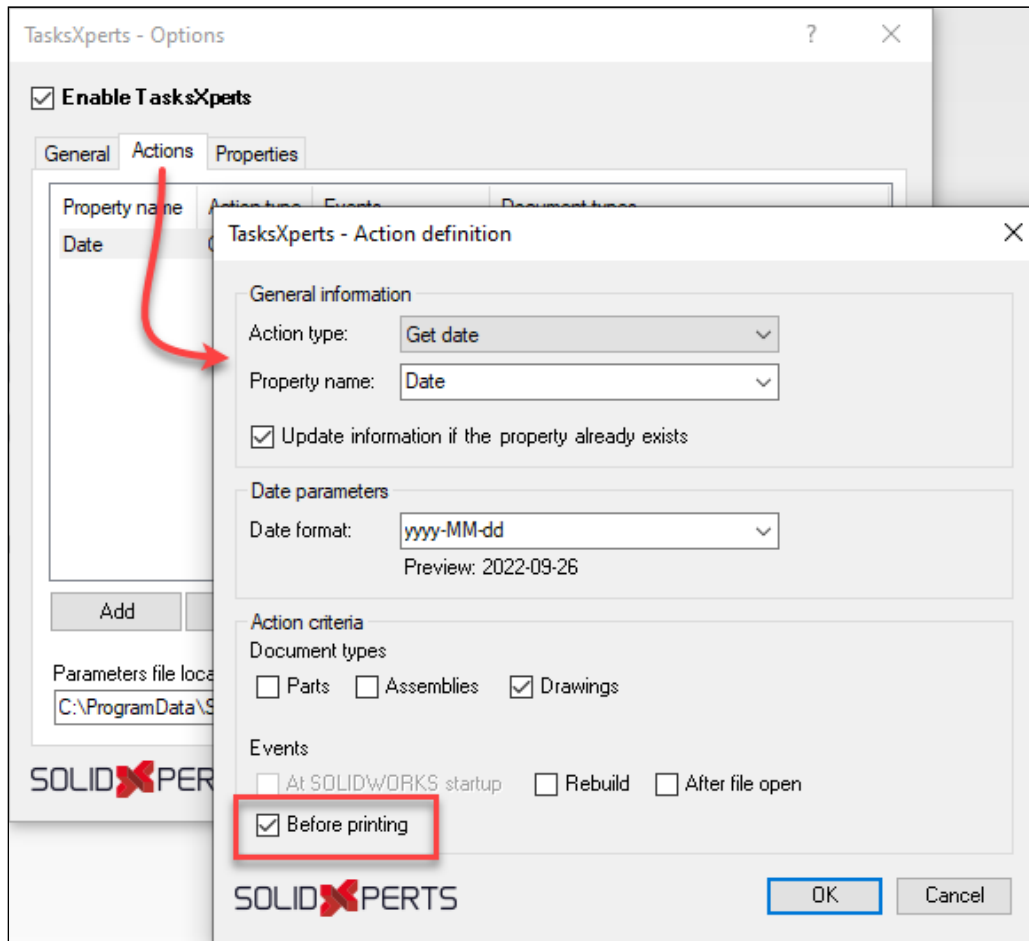


When you close SOLIDWORKS and this option is checked, a message asks if you want to transfer (release) the license. The SOLIDWORKS Activation Tool is then displayed for transfer.



## Action executed when printing

It is now possible to execute an action when a file is printed:



All the actions that are available through the Actions tab can now be executed when printing.