



ToolsXperts 2024

What's New

SOLID  PERTS
par solidxperience



Table of contents

General	3
Tip of the day	3
File name recipes management.....	3
CutXperts	3
Automatic drawings creation.....	3
Sheet metal – Set holes on specific layers	4
New automatic properties	4
PrintXperts.....	5
Add opened files	5
Quantity Report	5
New column types	5
Report template usage	5
Adding the top-level assembly to the report.....	6
SaveXperts.....	6
Automatic drawings creation.....	6
Export of bodies	7
Sheet metal export modes	8
Disabling the version confirmation message	9
TasksXperts	9
Actions triggered by the active document change	9



General

Tip of the day

Tips of the day are now displayed when loading the ToolsXperts add-in. These tips focus on the ToolsXperts and discuss, among other things, features that are often overlooked because they are done in the background. An example of discrete functionality is the fact that TasksXperts can update notes in the drawing title block by reading properties located in the bodies (sheet metal, weldments, etc.).

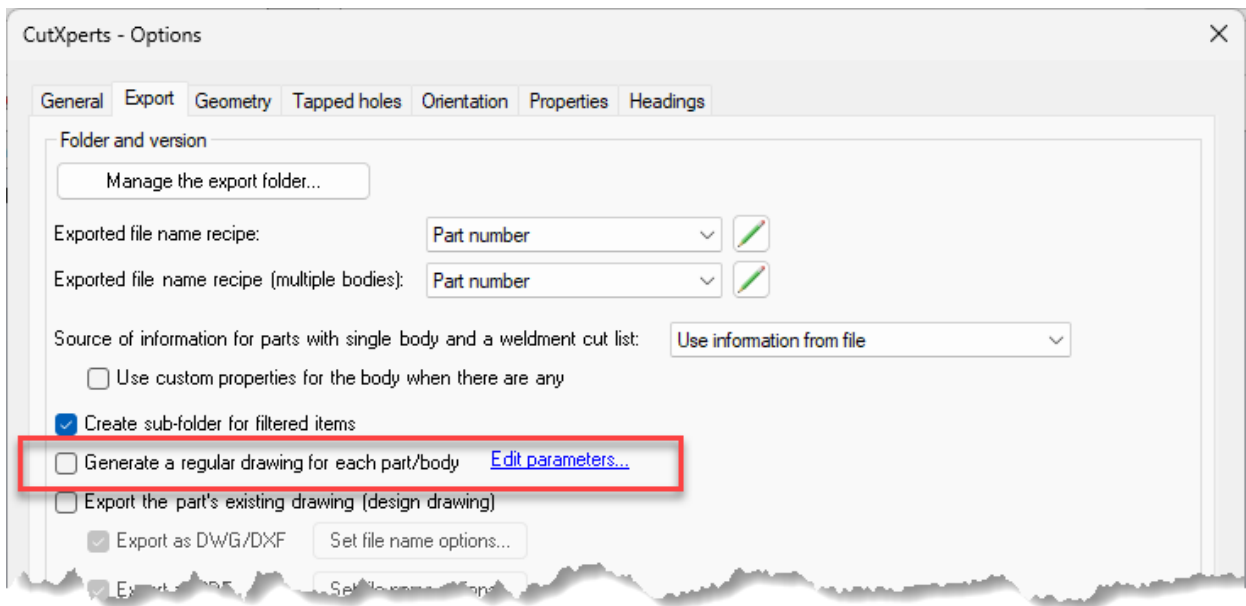
File name recipes management

It is now possible to use the thickness of the part in recipes. This was possible in the past, but only indirectly using a custom property.

CutXperts

Automatic drawings creation

A new option allows you to create drawings while processing parts.

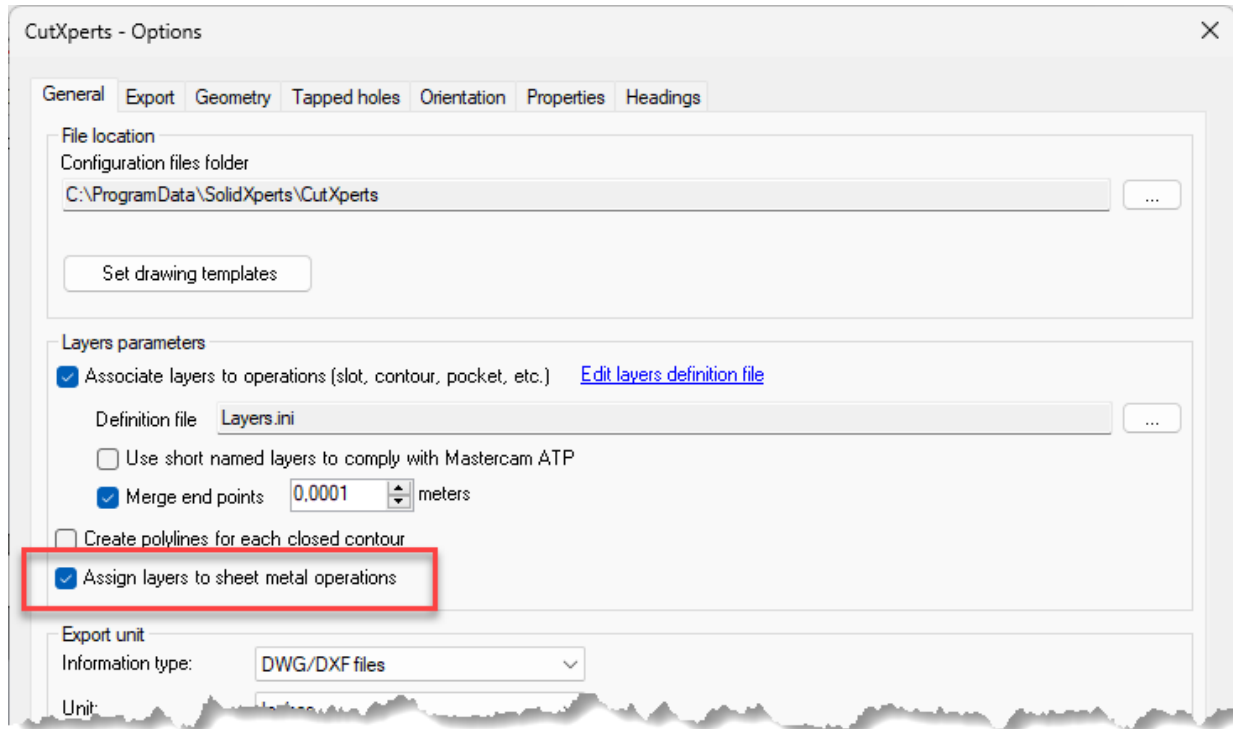


See the section about SaveXperts for details.



Sheet metal – Set holes on specific layers

Normally, CutXperts creates 2 layers for sheet metal parts: one layer for the external contour and one for the internal contours. A new option allows you to place holes on hole specific layers, the result being the same as for non-sheet metal parts.



New automatic properties

New properties are now created in the temporary drawing:

- sxMass: Mass of the processed body.
- sxExportedFilename: Name of the DXF/DWG file that is generated for the processed body.
- sxExportedFilenameWithoutExtension: Same as for the *sxExportedFilename* property, but without the DWG/DXF extension.

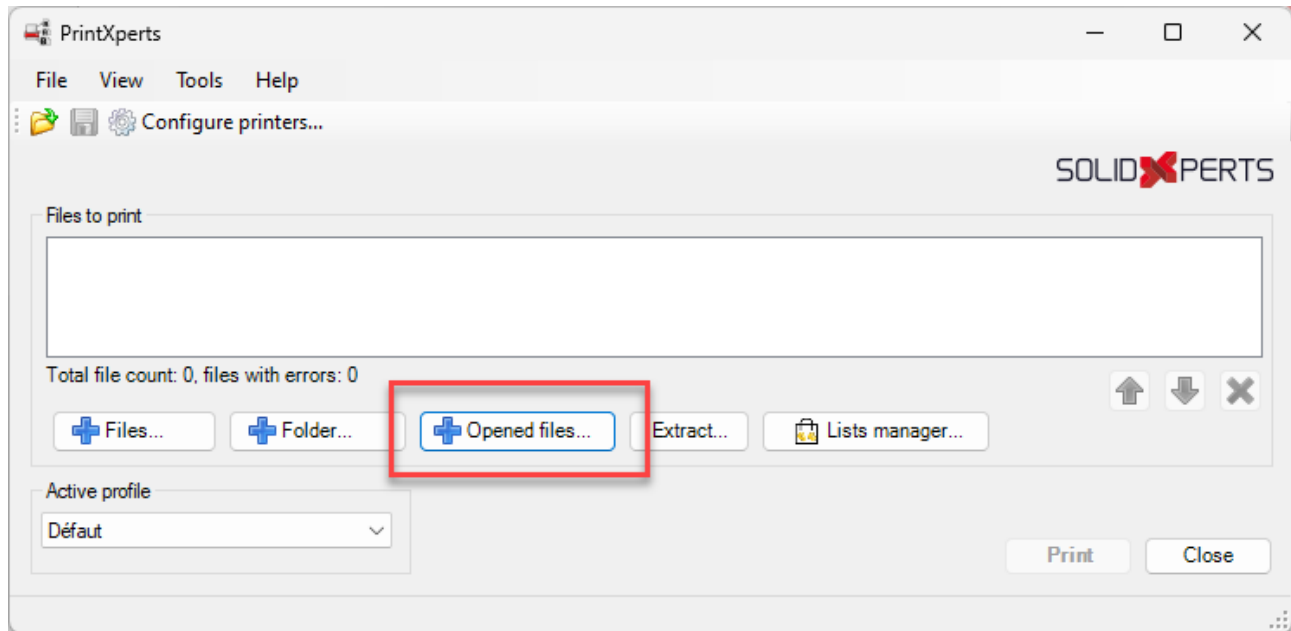
As it is already the case for existing "sx" properties, simply create notes in the temporary drawing template and link these notes to the properties with a \$PRP link (not \$PRPSHEET).



PrintXperts

Add opened files

A button has been added to the main window to make it easy to add drawings that are already open in SOLIDWORKS to the list:



Quantity Report

New column types

The following codes are now available for report columns:

- \$PARENTS: Lists each assembly that contains the item along with the quantity used by those parents. The *ParentIdentifier* parameter allows you to set the source used to describe each parent (e.g. a property).
- \$HOLE_COUNT: Gives the number of holes in the part, whether they are tapped or not.
- \$THREADED_HOLE_COUNT: Gives the number of tapped holes in the part.

Report template usage

Until now, Quantity Report generates an Excel file from scratch. It is now possible to use an existing file as a template. New parameters have been added to the INI file (existing INI files must be updated manually) to allow setting options for these templates:

- ExcelTemplateFilePath: Excel document template full path.
- ExcelFileTitleRowID: Line number where the parts list should begin. The previous lines can therefore be used for headers and a logo.
- HeaderCellData: Block for defining a header cell. A definition block must be defined for each header cell.



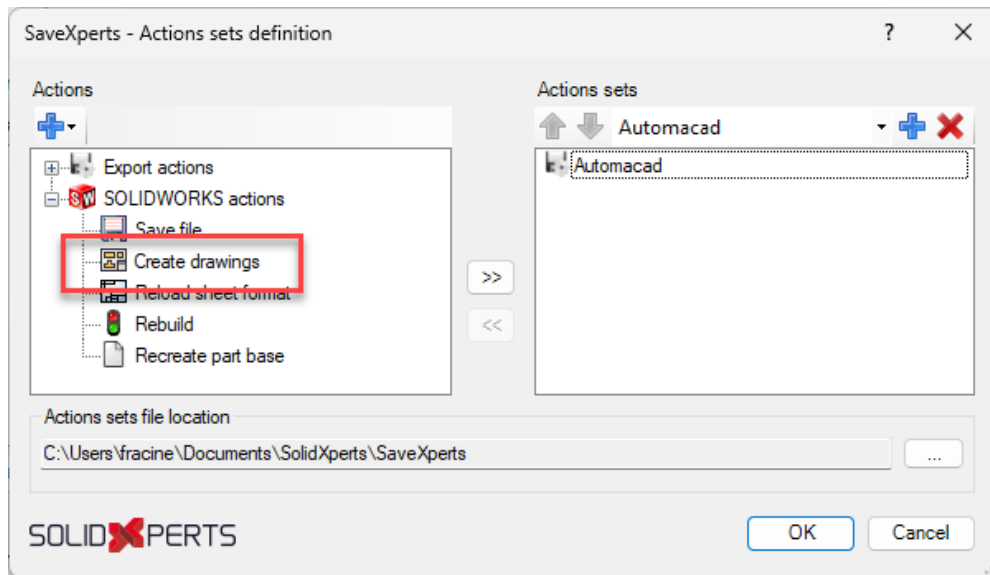
Adding the top-level assembly to the report

The parts list does not contain the top-level assembly itself. It is now possible to get this assembly as the first line of the report. Simply use the parameter *IncludeProcessedAssembly* with the value *True*.

SaveXperts

Automatic drawings creation

A new action has been added for creating drawings:



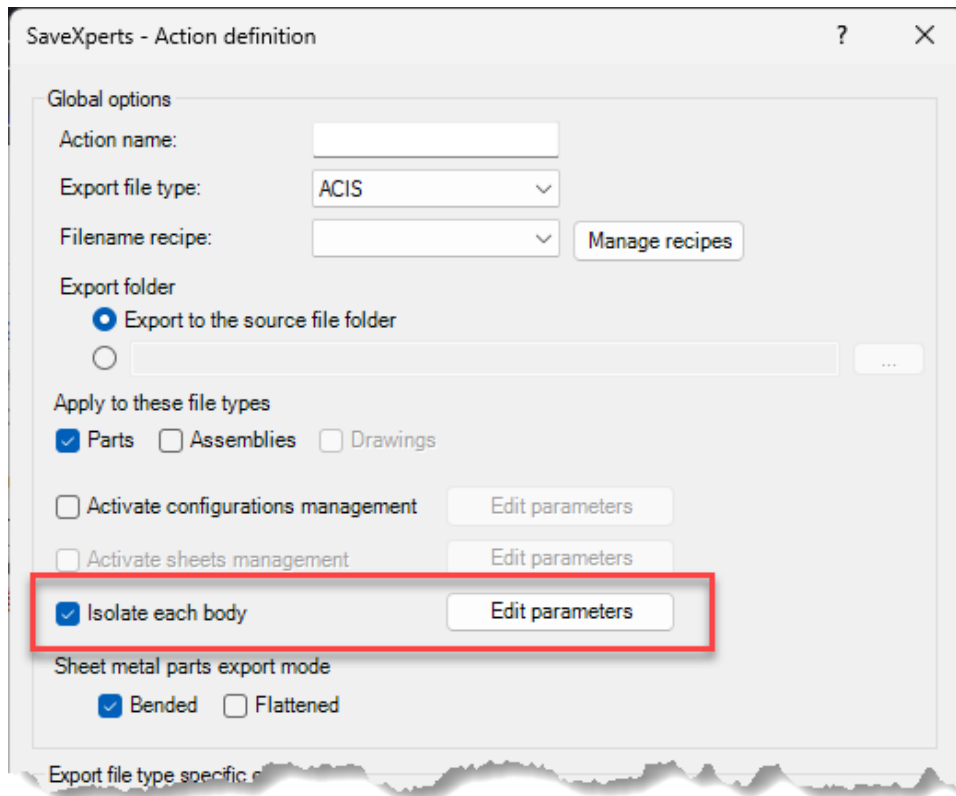
This new action therefore makes it possible to generate drawings from single or multiple body parts as well as from assemblies. Sheet metal bodies are also supported. The configuration window for this action allows you to set the type of element to process. It also allows you to set the drawing template to use for each type. Drawing templates must contain predefined views.

The configuration window for this action also allows you to set the filename recipe to use to name the drawing files and, where applicable, the name of the drawing sheets.



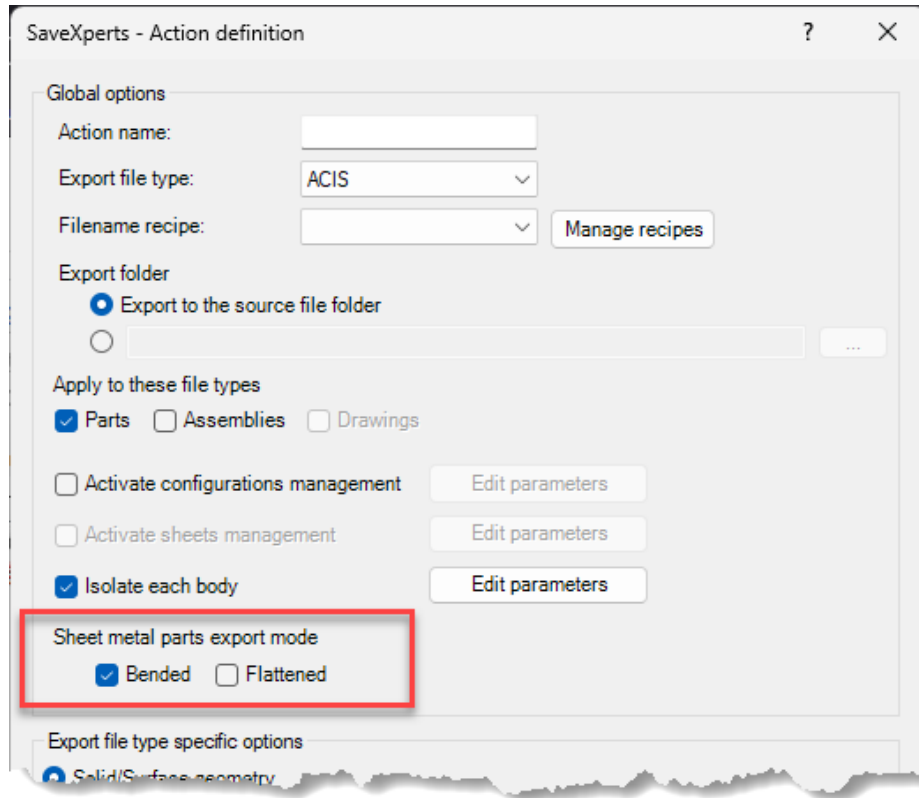
Export of bodies

It is now possible to export (STEP, IGS, etc.) each body of a part.



Sheet metal export modes

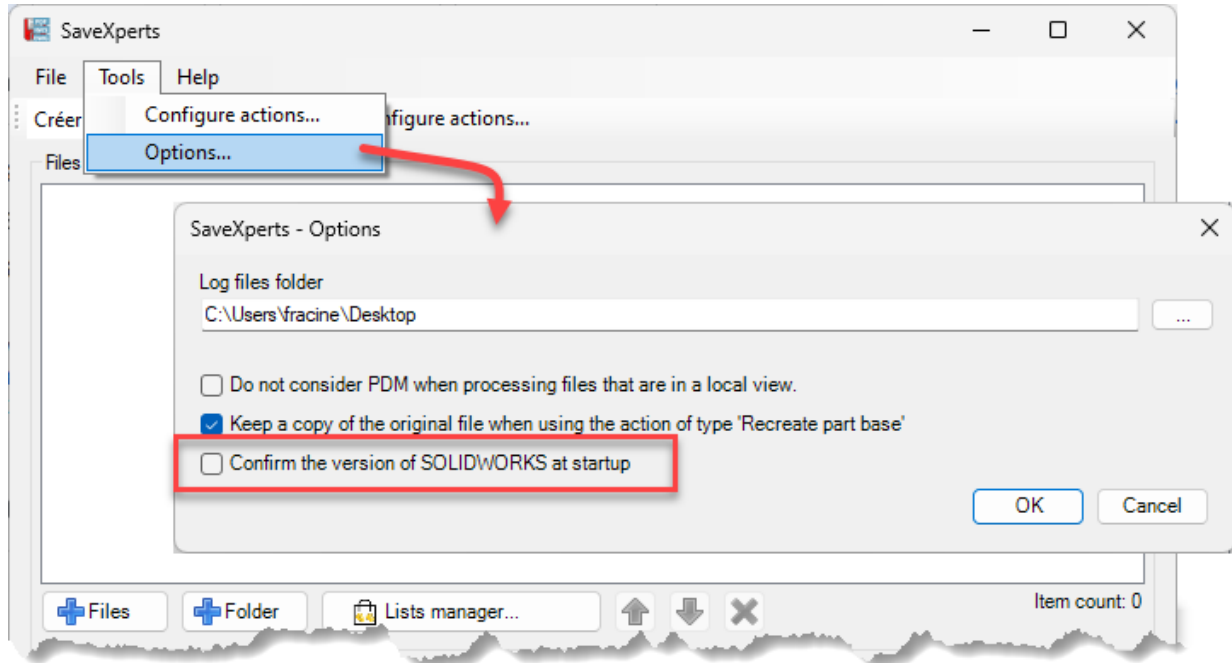
It is now possible to set the export state of sheet metal parts:





Disabling the version confirmation message

A message is displayed when starting SaveXperts to confirm which version of SOLIDWORKS will be used. It is now possible not to display this message:



TasksXperts

Actions triggered by the active document change

When creating actions, active document change (switching from one file to another) is now available as a trigger type.