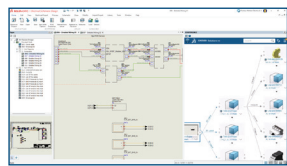


WHAT'S NEW IN SOLIDWORKS® 2025—ECAD

Electrical Schematic Designer and SOLIDWORKS Electrical

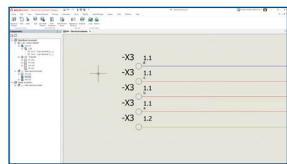


1 Save the Product Structure of Electrical Projects to 3DEXPERIENCE® (Electrical Schematic Designer)

- Save the product structure data for each symbol with the electrical project.
- Create the product structure from your electrical project and combine it with the mechanical product structure from SOLIDWORKS on the 3DEXPERIENCE platform.

Benefits

Streamline BOM documentation using combined electrical and mechanical product structure.

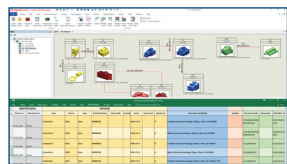


2 Add Distributed Terminal Functionality

- Select specific pins when adding a new terminal strip.
- Distribute a single circuit over multiple schematic symbols.

Benefits

Facilitate electrical schematic designs involving complex terminal strip configurations.

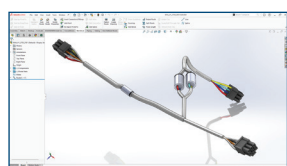


3 New Tool to Import New Electrical Content

- Import cable references and manufacturer's part information to libraries using the enhanced Microsoft® Excel-based template, customizable for different electrical classification types.
- Include cable core and component terminal information in the import.

Benefits

Speed up the import of electrical cable references and manufacturers' parts with the new import tool.

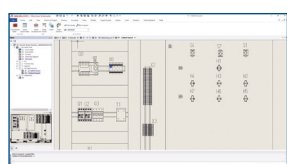


4 Prevent Loops When Routing Harnesses With Splices (SOLIDWORKS Electrical 3D)

- Position all splices on the bundle centerline to simplify the creation of the segments while maintaining connection logic in the bundle.

Benefits

Speed up 3D harness route creation by simplifying the positioning of splices in the bundle.

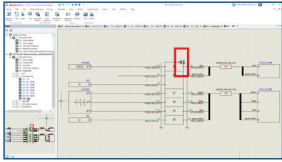


5 Enhanced 3D Drawing Layout Capabilities

- Leverage the new dynamic drawing and schematic annotation capabilities to speed up the creation of documentation.
- Use when designing electrical control panels or harnesses to link drawing component views to the corresponding symbols in the original schematic.

Benefits

Improve digital connectivity by creating an intelligent 2D drawing from a 3D representation of an electrical cabinet or harness.

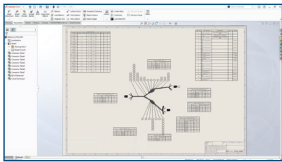


6 Create Terminal Strip Drawings With Connections Using Wires and Cables

- Display destination information for both wires and cables for terminal strip drawings.
- Improve visibility of destination components providing multiple choices for terminal strips.

Benefits

Improve the design flexibility of terminal strip drawings with enhanced wire and cable destination information.



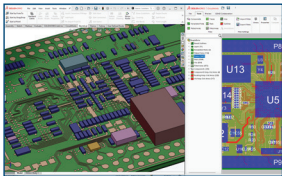
7 Create Improved Harness Board Drawings From 3D Routes (SOLIDWORKS Electrical 3D)

- Improve the organization and positioning of tables and balloons on flattened drawings with refined auto-placement of tables, dimensions, balloons, and formats.
- Automatically update the electrical harness documentation after design changes.

Benefits

Create improved harness board drawings and documentation for manufacturing.

ECAD-MCAD Collaboration for PCB (CircuitWorks™)



8 Copper Trace Support for ECAD/MCAD in SOLIDWORKS

- Import internal and external copper features including vias, traces, and shapes to SOLIDWORKS using IDX files.
- Enable more accurate mass, thermal, structural, shock, and electromagnetic analyses with access to more detailed copper trace information in the PCB.

Benefits

Streamline the ECAD-MCAD collaboration process for a more complete PCB design and simulation workflow.

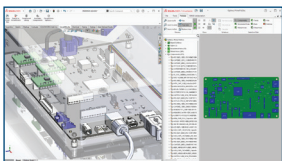


9 ECAD-MCAD Support on the 3DEXPERIENCE Platform

- Exchange ECAD (IDX) data between ECAD and MCAD users via the 3DEXPERIENCE platform.
- Share a common PCB component library on the 3DEXPERIENCE platform.

Benefits

Collaborate on ECAD and MCAD designs on the 3DEXPERIENCE platform.



10 ECAD-MCAD Collaboration Now Available in All SOLIDWORKS Offerings

- CircuitWorks is now available to all SOLIDWORKS users.

Benefits

Enable all SOLIDWORKS users involved in ECAD and MCAD design to work bidirectionally.

Our 3DEXPERIENCE® platform powers our brand applications, serving 12 industries, and provides a rich portfolio of industry solution experiences.

Dassault Systèmes is a catalyst for human progress. We provide business and people with collaborative virtual environments to imagine sustainable innovations. By creating virtual twin experiences of the real world with our 3DEXPERIENCE platform and applications, our customers can redefine the creation, production and life-cycle-management processes of their offer and thus have a meaningful impact to make the world more sustainable. The beauty of the Experience Economy is that it is a human-centered economy for the benefit of all – consumers, patients and citizens. Dassault Systèmes brings value to more than 300,000 customers of all sizes, in all industries, in more than 150 countries. For more information, visit www.3ds.com.



3DEXPERIENCE®



Europe/Middle East/Africa
Dassault Systèmes
10, rue Marcel Dassault
CS 40501
78946 Vélizy-Villacoublay Cedex
France

Asia-Pacific
Dassault Systèmes
17F, Foxconn Building,
No. 1366, Lujiazui Ring Road
Pilot Free Trade Zone, Shanghai 200120
China

Americas
Dassault Systèmes
175 Wyman Street
Waltham, Massachusetts
02451-1223
USA