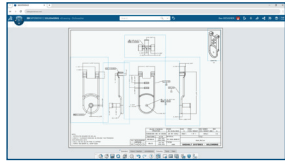


WHAT'S NEW IN THE SOLIDWORKS® BROWSER-BASED ROLES

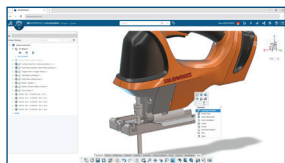


1 Versatile Definition Workflows

- Utilize 2D- and 3D-definition workflows based on your needs, with the new 2D authoring and dimensioning capabilities.
- Seamlessly add views, dimensions, and tolerances directly within the 2D drawing environment, so you won't need to switch to 3D for annotation.
- Automatically generate 3D annotations and views, ensuring consistency and accuracy across both forms of definition.

Benefits

Break down the barrier between 2D and 3D with a single source of truth, combining the benefits of model-based definition with the ease of 2D drawings.

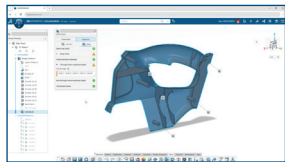


2 Command Search

- Enhance your productivity by searching for commands directly from the S-key shortcut menu.
- Quickly locate commands based on their name, keywords in the tooltip description, or common synonyms.
- Access any command quickly from the shortcut menu even if you don't know the exact command name.

Benefits

Say goodbye to time-consuming navigation and accelerate your design process with a more efficient way to access all your favorite commands.

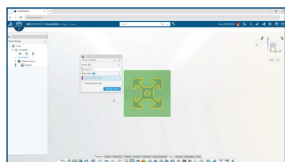


3 DFM Helper

- Set up checks to analyze your design for specific errors that can hinder manufacturability.
- Define checks for certain parameters, such as maximum part size, minimum wall thickness, and hole specifications, to ensure that designs are manufacturable.
- Identify critical design errors early in the design process to avoid delays during manufacturing.

Benefits

Improve manufacturability by proactively identifying design flaws with customizable geometry checks, while streamlining production workflows.

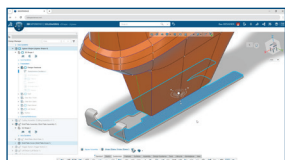


4 Picture to Sketch

- Seamlessly convert images into editable parametric 2D sketches.
- Trace hand-drawn sketches to rapidly translate your ideas into reality.
- Trace screenshots of 2D sketches and drawings from other CAD systems to more easily migrate to 3D CAD.

Benefits

Translate your ideas into reality with the ability to rapidly convert images into fully editable 2D sketches.

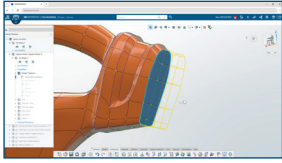


5 Align to External Geometry

- Quickly reference other components and assemblies directly during the subdivision editing process and ensure proper alignment of your freeform geometry.
- Easily design a freeform shape around existing geometry with new functionality helping you align the subdivision to external geometry.

Benefits

Easily design a freeform shape in the context of external geometry with new alignment tools.

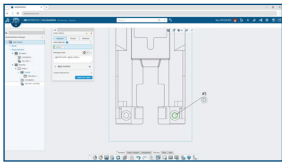


6 Alternate Robot for Modifying a Sub-D Mesh

- Access additional mesh modification options directly from the robot via the new modifier robot.
- Make faster and more intuitive mesh modifications without interrupting your workflow.
- Quickly modify the mesh and eliminate unnecessary mouse travel by accessing key functionality directly from the robot.

Benefits

Make faster and more intuitive mesh modifications with an alternate robot experience.

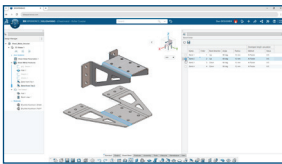


7 Hole Callout

- Use a single command to create comprehensive hole callout annotations.
- Accurately define proper hole fit, sizing, position, and tolerance with a single annotation.
- Eliminate discrepancies and automatically capture instance counts for hole patterns.

Benefits

Efficiently and accurately define hole information with a single comprehensive callout to ensure proper fit, size, and position.

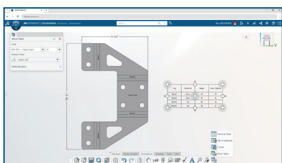


8 Bend Order

- Easily review both the folded and flattened states of a sheet metal component, along with key manufacturing information, in a bend table format.
- Review your design with intuitive cross-highlighting between the table and graphics area.
- Access a full table outlining key information such as bend order, direction, angle, radius, and more to ensure the proper form and fit of sheet metal components.

Benefits

Ensure your design is correct and manufactured properly the first time with the ability to quickly review all the key bend information.

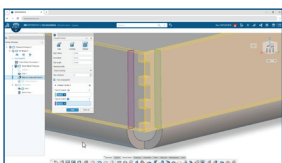


9 Bend Table and Flat Pattern Documentation

- Foster clear 2D communication and documentation for sheet metal components by adding flat pattern views and bend lines directly to your drawing.
- Communicate key manufacturing information such as bend order, direction, angle, radius, and more alongside your flat pattern with bend tables.

Benefits

Provide clear, professional documentation to manufacturing for your sheet metal components with detailed flat patterns and bend tables.



10 Closed-Corner Feature

- Ensure accurate sheet metal fabrication and alignment for welding with a single, easy-to-use feature that extends sheet metal geometry.
- Easily control the precise gap distances and end types of adjacent walls and flanges.
- Tailor your design with a different joint type such as butt, overlap, or underlap for adjacent walls and flanges.

Benefits

Speed up the design process to close off gaps between sheet metal flanges for a clean, accurate, and professional finish.

Our 3DEXPERIENCE® platform powers our brand applications, serving 12 industries, and provides a rich portfolio of industry solution experiences.

Dassault Systèmes is a catalyst for human progress. We provide business and people with collaborative virtual environments to imagine sustainable innovations. By creating virtual twin experiences of the real world with our 3DEXPERIENCE platform and applications, our customers can redefine the creation, production and life-cycle-management processes of their offer and thus have a meaningful impact to make the world more sustainable. The beauty of the Experience Economy is that it is a human-centered economy for the benefit of all – consumers, patients and citizens. Dassault Systèmes brings value to more than 300,000 customers of all sizes, in all industries, in more than 150 countries. For more information, visit www.3ds.com.

